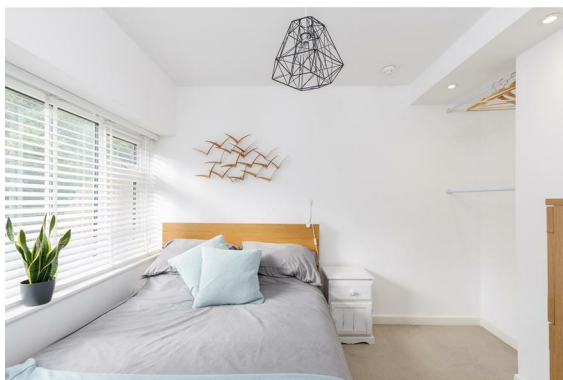


Wilbury Road

Hove





We know just the place...



A bright and airy ground floor west facing apartment with a share in the freehold being positioned mere moments away from the buzz of Church Road and convenience of Hove Station. Ideal for a weekend retreat or equally for the hard working commuter.





Approximate gross internal floor area 33 sq m/ 355 sq ft

Whilst every care has been taken to ensure accuracy, dimensions are approximate and for illustrative purposes only.

Created by Property Photography UK for Lextons. All rights reserved.

Meet us here...
174 Church Road
Hove
BN3 2DJ

We aim to make our particulars both accurate and reliable. However they are not guaranteed; nor do they form part of an offer or contract. If you require clarification on any points then please contact us, especially if you're traveling some distance to view. Please note that appliances and heating systems have not been tested and therefore no warranties can be given as to their good working order.